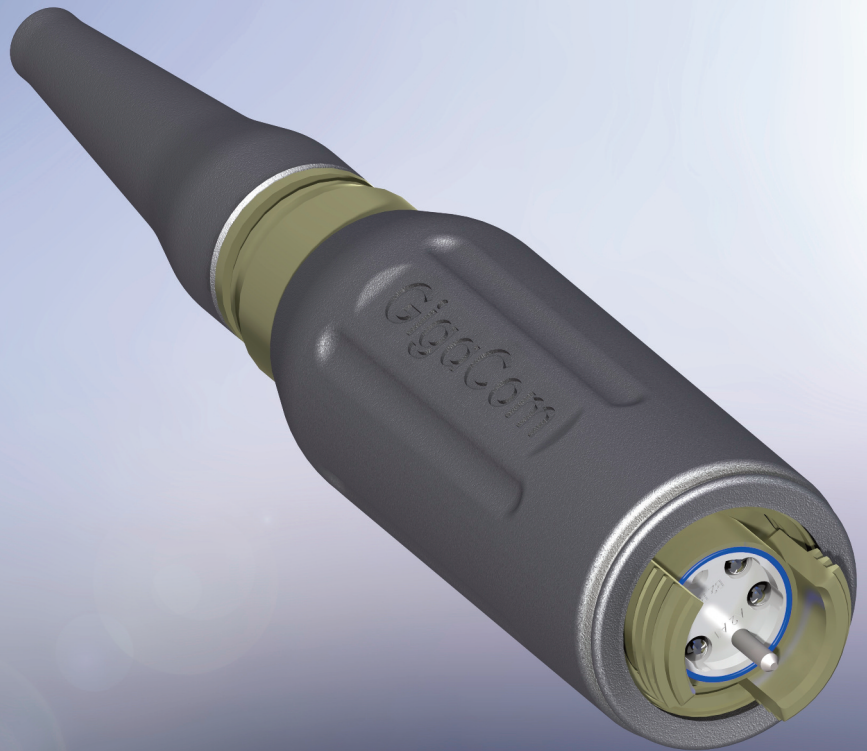


EMM Harsh Environment Fiber Optic Connector

The EMM™ Connector features EBOSA™ superior expanded beam performance and ease of use. Given the use of totally standard parts in termination such as a fiber optic LC ferrule and spring it genuinely allows this rugged connector to be repaired in the field.

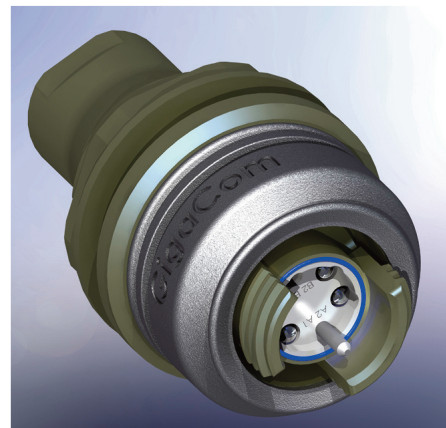


Features

- EBOSA™ patented expanded beam technology
- Hermaphroditic interconnection, compatibility with other products on the market
- True field repairability with standard parts
- Rugged light weight construction
- Enhanced market leading optical performance
- Ease of cleaning with no special tool

Applications

Military Communications
Outside Media Broadcast
Industrial Communications



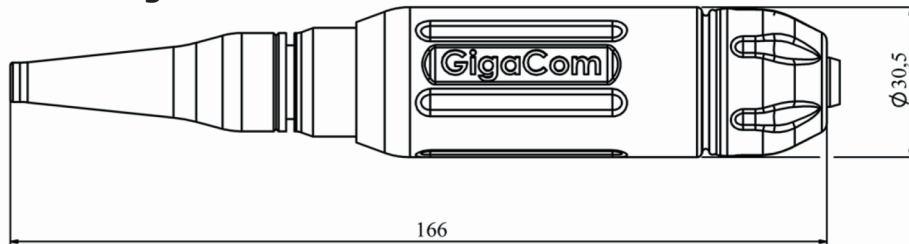
Performance:

Optical Loss	50/125 @ 850/1300nm 0.7 dB typ 9/125 @ 1310/1550nm 1.0 dB typ
Return Loss	9/125 @ 1310/1550nm 25-40 dB (dependent on specification)
Operating Temperature	-40 to +70°C
Storage Temperature	-55 to +85°C
Water Immersion up to	2M depth
Vibration Sinusoidal	10-500Hz, 0.75 amplitude @ 10g acceleration
Free Fall Resistance	500 falls onto concrete from 1.2M height
Bump Resistance	4000 bumps @ 40g acceleration
Tensile Strength	Tensile of 1500N, cable dependent
Cable Variations	Compatible with tactical cable: Plug ≤6mm o/d Bulkhead ≤3mm o/d <i>Other cable sizes available on request</i>

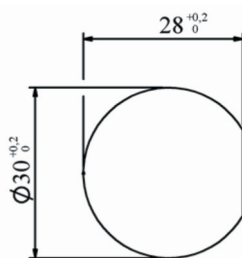
Performance to reference sample

Overall Dimensions: All dimensions in mm

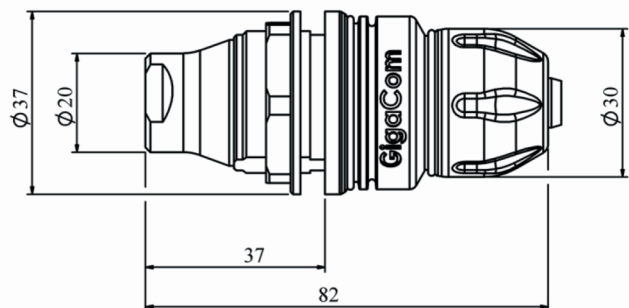
EMM Plug



Panel Cutout



EMM Jam Nut Bulkhead



1, 2, 3 and 4 channel SM and MM available. Other platforms available on request.

All data supplied subject to change without notice.

For more information contact:

GigaCom Interconnect AB

Säterig. 23, 41764 Göteborg, Sweden. Tel: +46 31 555970
email: sales@gigacom.se • www.gigacom.se

